

# ADC Maps on CD

---

Available now for GIS

NEW! ADC Maps on CD for Home and Office  
\*Coming Soon



# ADC MAP PRODUCTS ARE NOW AVAILABLE FOR YOUR COMPUTER

- ADC Maps on CD for GIS
- ESRI project files included

Who uses ADC Maps? State agencies, county governments, municipalities, professional service contractors, educational institutions, and libraries, to name just a few. ADC Maps on CD's powerful new features increase productivity and accuracy, deliver fast, robust solutions, and decrease travel time.



**NEW!!**

## ADC Maps on CD for Home and Office

---

- ADC Maps on CD for Home and Office will be available soon to the general public

*Retail price will be under \$40 per atlas*



# ADC Maps on CD for GIS

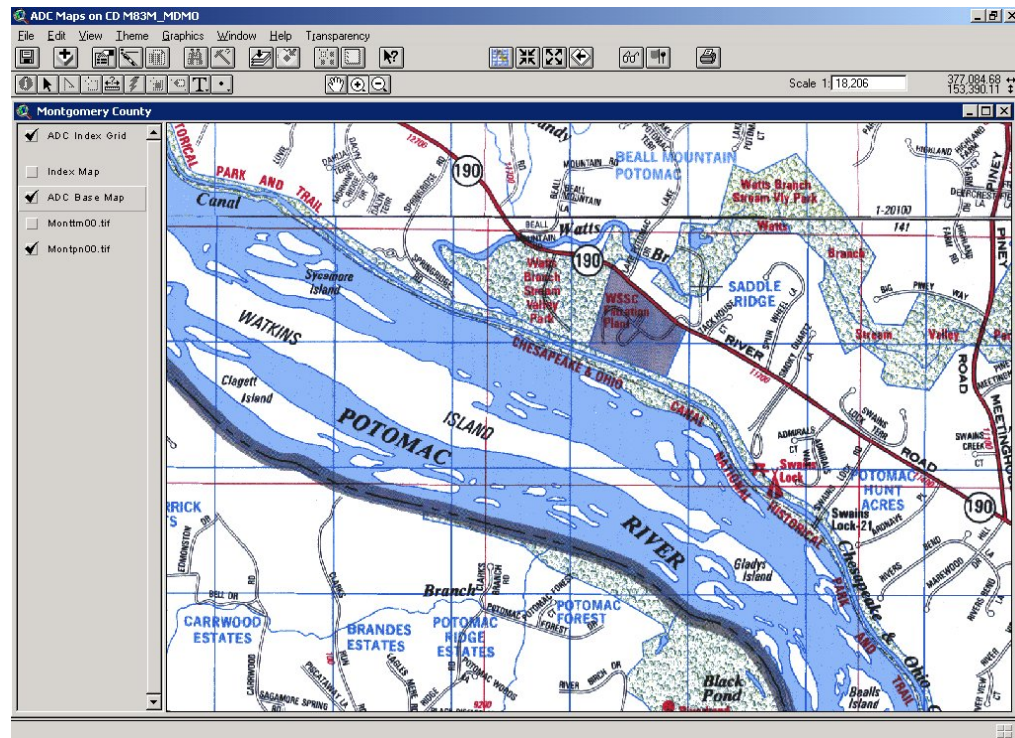
---

- Single User License for 1 Atlas - \$250
- Single User License for 5 Atlases - \$995 (under \$200 each)
- Single User License for All of Maryland - \$3,995 (under \$167 each)
- Updates are free for 90 days and are available beyond 90 days at 40% of the Original License
- **NEW!** County Government License (Covers all County Departments) – for \$7,995 annual license – Cover all Departments within the County, Police, Fire, DPW, Planning, IT, Libraries, Schools, etc. Instead of licensing each Department separately



# ADC MAP DATA and SOFTWARE PRODUCTS

- Georeferenced .tif files
- ADC Grid
- ADC Index/Gazetteer included



## FEATURES AND BENEFITS

---

- Perform location lookups quickly with "point and click" map indices
- Direct "zoom" takes users quickly from any street address or point of interest directly to map destination
- Includes street locations, schools, hospitals, churches, points of interest, parks, locator grids, and more
- Offers flexibility of printing maps in any size, shape, and scale
- Maps registered to ADC's standard grid and also to MD State Plane Coordinate System enabling precise image positioning and reference points that correlate locations to a variety of mapping overlays
- Enables concurrent usage of ADC maps with data such as surveys, property lines, tax assessments, flood plains, population data, delivery routes, sales regions, etc.



## FEATURES AND BENEFITS (CONTINUED)

---

- Allows integrated solution by linking to ArcGIS, ArcView, MDProperty View, and other geospatial data
- Available for Maryland, Northern Virginia, Delaware and Washington DC; other areas upon request
- CD includes maps, indices, and coordinate systems in TIFF and TFW (world file) format at 200 DPI with 16 bit images (data are current as of publication date)



## ADC MAP AVAILABILITY

---

### All Maryland Counties

including Allegany and Garrett plus the 50 mile radius map of Baltimore

\* coming soon Chesapeake Bay nautical Chart Map

### All available Virginia Counties and ADC vicinity Maps

including 50 mile radius of Washington DC

### All Delaware Counties

### Pennsylvania

Philadelphia

Lancaster

Bucks

Montgomery

\*more coming





## HOW CAN YOU USE ADC DIGITAL DATA?

---

- Power users
  - GIS specialists
- Casual users
  - Computer users who frequently use ADC map data but who are not GIS specialists
- Special users
  - Companies that deliver products or send their employees to a particular address (dispatchers)
- General public
  - People who want to use ADC map data with their home computer



## POWER USERS

---

- Use ArcGIS or ArcView (Environmental Systems Research Institute)
- ADC Digital Maps using ArcView provide for background transparency so that you can view ADC maps overlaid on other digital geospatial data
- Works with MdPropertyView Data (Maryland Department of Planning)
- Transparency tool included – turn off background colors etc.



## CASUAL USERS

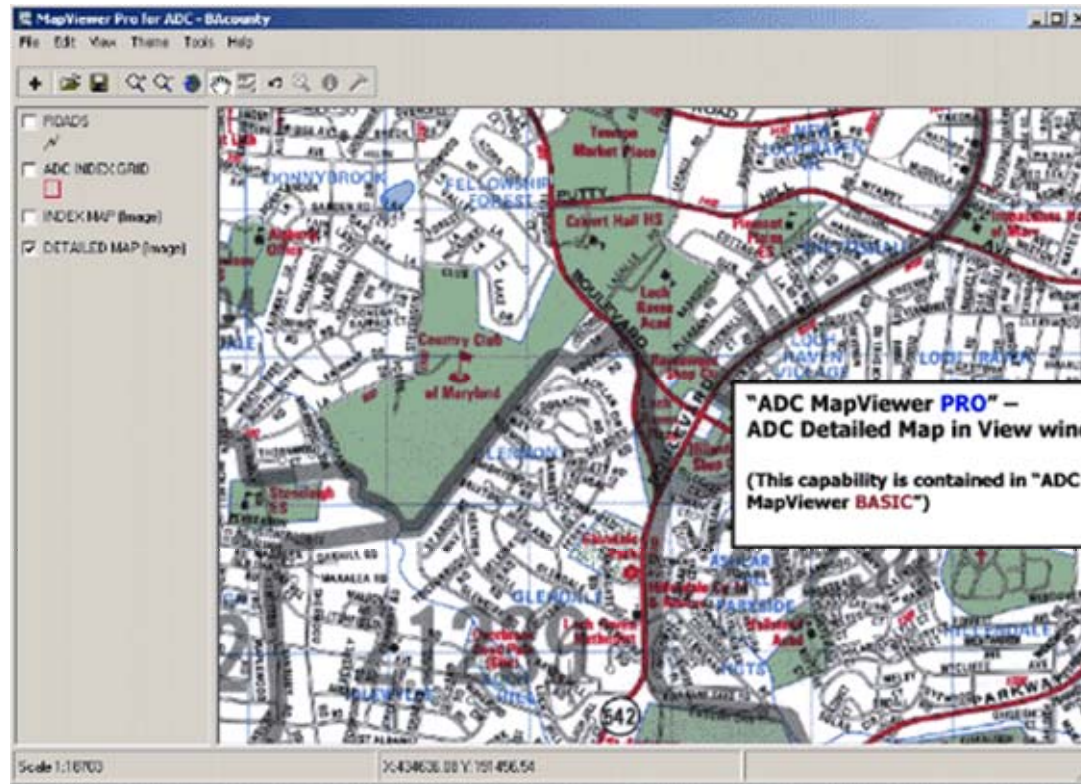
---

- Easy-to-use software tools available for use with ADC map data
  - **MapView Basic**
  - **MapView Advanced**
    - All Basic functions plus the ability to search the index (gazetteer) in the back of the ADC Atlas
  - **MapView Pro**
    - All Advanced functions plus the ability to search by individual addresses
  - **ADC Grid Look-up – BASIC, ADVANCED and PRO versions**
  - **New! Home and Office Use “ADC Maps on CD” will be available soon to the General Public.**



# MapViewer BASIC – FREE with purchase of ADC Maps on CD License

- View
- Zoom
- Pan
- Print maps
- Copy to Clipboard
- Save projects

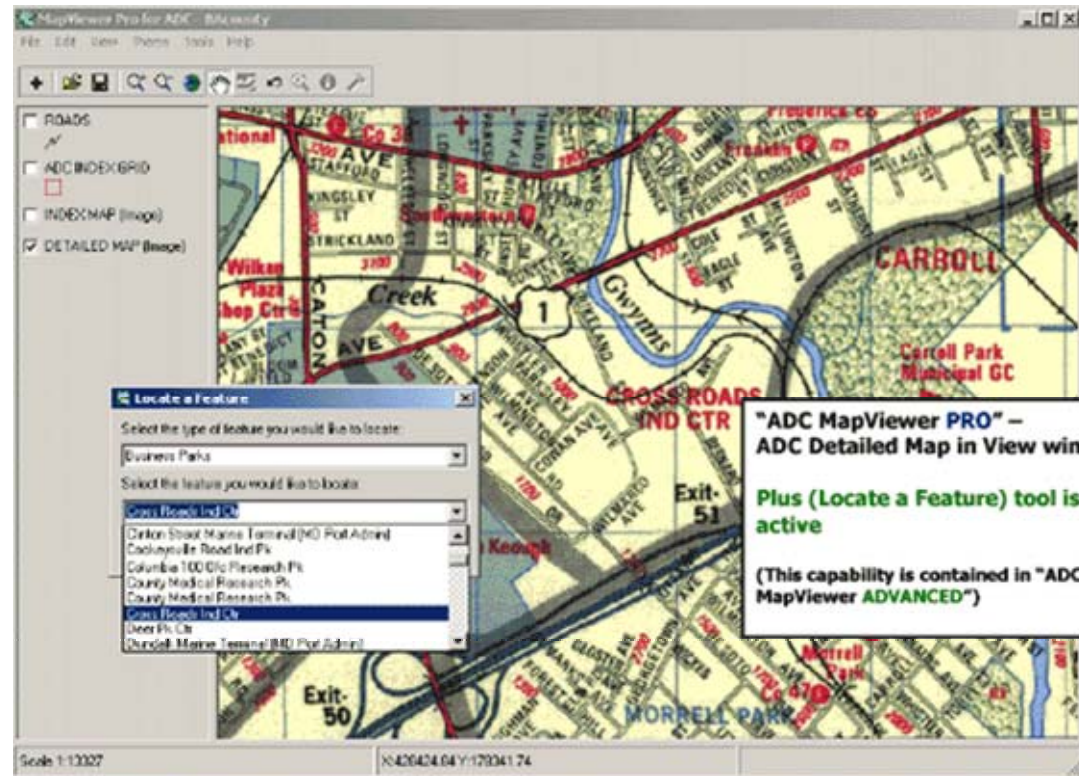


# MapViewer ADVANCED

All the functionality of  
MapViewer BASIC plus

Look up features from  
the ADC Index located in  
the back of the ADC  
book maps

Cost - \$49.95

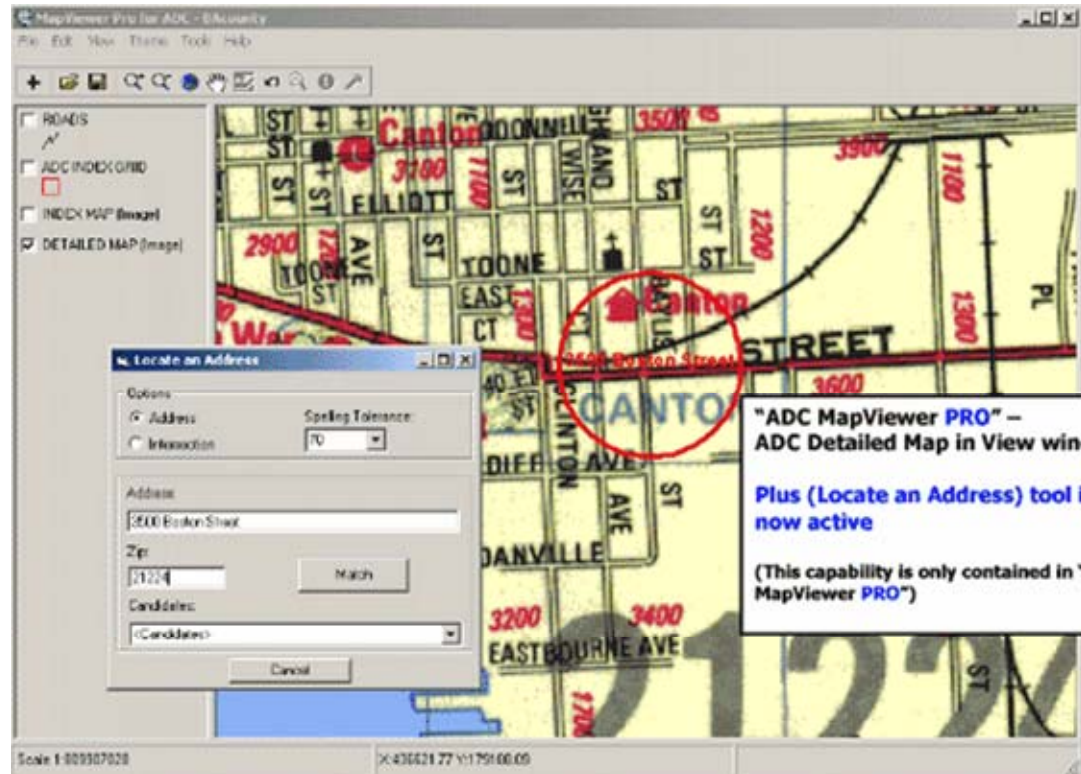


# MapViewer PRO

All of the functionality  
of MapViewer BASIC  
and ADVANCED plus

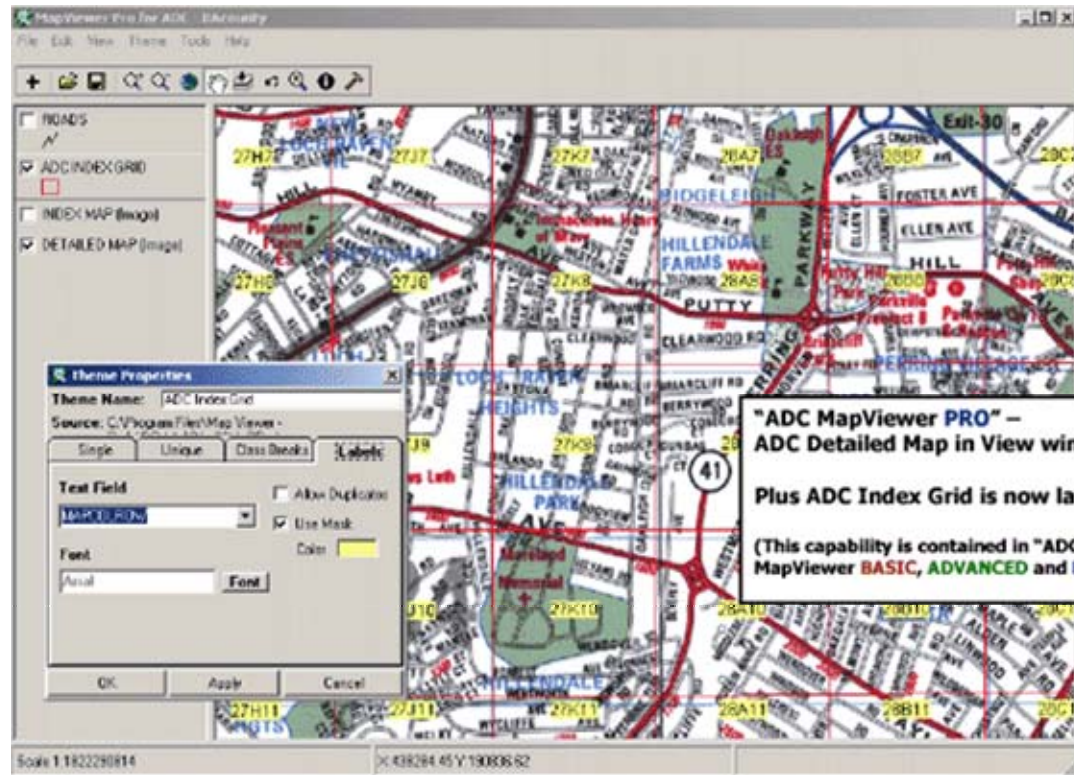
Look up individual  
addresses

\$250 Single User  
License



# MapViewer BASIC, ADVANCED and PRO continued

Turn on the ADC Grid and the ADC Page, Column and Row appear on the map



## Software for SPECIAL USERS

---

- Tools for dispatchers
  - **Grid Look-up Basic**
    - Locate an address and identify the ADC map book page and grid
    - Store addresses in a database along with the grid, add descriptions, mark as complete/delivered, and re-order list
  - **Grid Look-up Advanced**
    - All Basic functions plus the ability to find the ADC map book page and grid for items in ADC's index (gazetteer)
    - Basic and Advanced versions only require a license for ADC Grid files
  - **Grid Look-up Pro**
    - All Advanced functions plus the addition of the ADC map with selected addresses
    - Requires a full ADC Maps on CD license





# GRID LOOK-UP BASIC

- Enter address and software will return the ADC atlas, page, column and row and add result to the list
- Enter descriptions to the result on the list
- Mark as complete as in a delivery has been completed
- Resort the list
- Save the list for repeat deliveries
- Requires ADC Grid file license - \$100 per atlas

The screenshot shows the ADC Grid Locator software interface. On the left, there is a search panel with the following fields and options:

- Active Projection: Maryland State Plane, NAD 83 Meters
- Enter a Street Address: 3500 Boston Street
- Enter a ZipCode: 21224
- Locate button
- Select a Candidate:
  - 3500 - 3598 BOSTON ST 21224
  - 2100 - 2210 BOSTON ST 21231
  - 2212 - 2218 BOSTON ST 21231
- Map Page: 43-J2
- Buttons: Clear Main View, Add Result to List, Clear List View

On the right, the 'ADC Digital Products' table is displayed:

Atlas Name	Address	Grid	Description
Baltimore	3500 Boston street 21224	43-J2	GIS Integrated Solutions LLC

A callout box on the right contains the following text:

**"ADC Grid Look-up" BASIC, ADVANCED and Pro have the ability to:**

- Look up addresses and return the matching ADC Atlas, page and grid.
- Add the results to a list that you can save, print out and manipulate.
- Add titles and descriptions

Arrows in the screenshot point from the callout box to the search fields, the candidate list, and the resulting table entry.

# GRID LOOK-UP ADVANCED

- All the features of ADC Grid Look-up BASIC plus look-up by the ADC index to find the resulting atlas, page, column and row
- Requires ADC Grid file license - \$100 per atlas

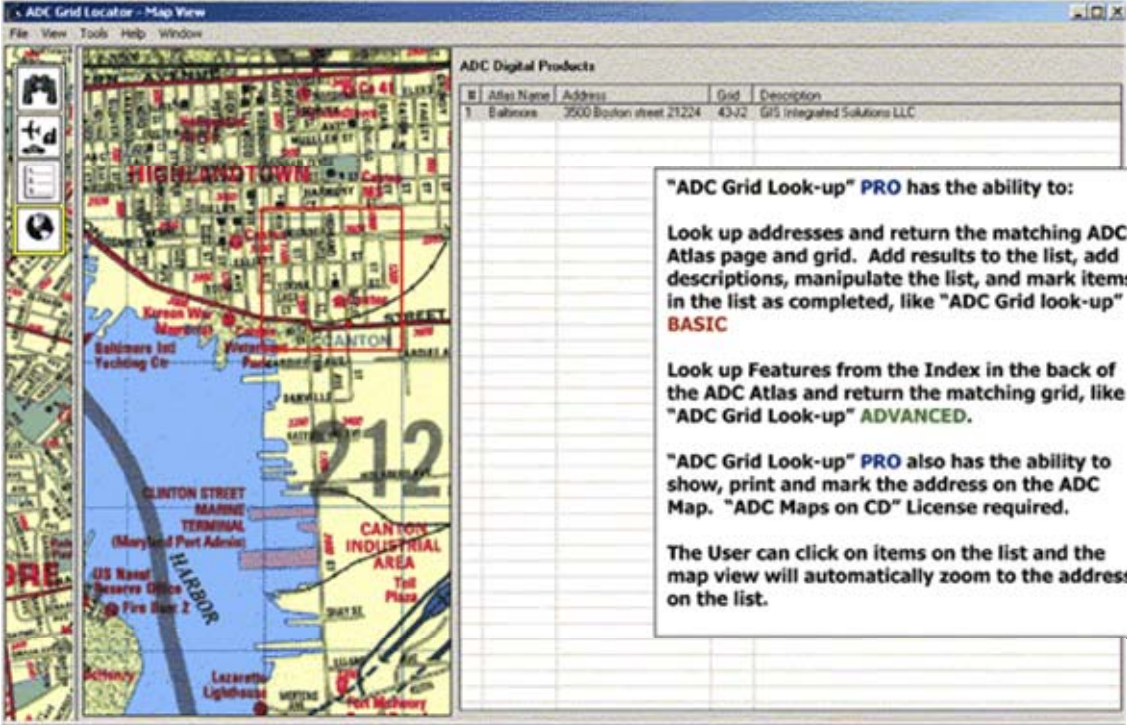
"ADC Grid Look-up" **ADVANCED** has the ability to:

Look up addresses and return the matching ADC Atlas page and grid. Add results to the list, add descriptions, manipulate the list, and mark items in the list as completed, like "ADC Grid look-up" **BASIC**

"ADC Grid Look-up" **ADVANCED** also can look up features (Airports, Business Parks, Schools) from the Index in the back of the ADC Atlas and return the matching grid.

# GRID LOOK-UP PRO

- All the capabilities of ADC Grid Look-up BASIC and ADVANCED plus now right click on list results and show map and the ADC Grid Look-up PRO software will display the result on the ADC map in the window
- Print maps
- Save results
- Requires ADC Maps on CD license - \$250 per atlas for single user



ADC Grid Locator - Map View

File View Tools Help Window

ADC Digital Products

#	Atlas Name	Address	Grid	Description
1	Baltimore	3500 Bolton street 21224	43-02	GIS Integrated Solutions LLC

**"ADC Grid Look-up" PRO has the ability to:**

Look up addresses and return the matching ADC Atlas page and grid. Add results to the list, add descriptions, manipulate the list, and mark items in the list as completed, like "ADC Grid look-up" **BASIC**

Look up Features from the Index in the back of the ADC Atlas and return the matching grid, like "ADC Grid Look-up" **ADVANCED**.

"ADC Grid Look-up" **PRO** also has the ability to show, print and mark the address on the ADC Map. "ADC Maps on CD" License required.

The User can click on items on the list and the map view will automatically zoom to the address on the list.

# COMING SOON ... ADC MAPS ON THE WEB

---

## ADC MAPS ON THE WEB

Coming Soon

ADC maps will soon be available on a subscription membership basis. A great service for libraries, county governments and other locations where drop-in users need access to street maps.



## OTHER PRODUCTS

---

- Combine ADC map data with ...
  - **Landsat 12.5 meter Thematic Mapper/Panchromatic imagery color composite**
  - **MdPropertyView**



## Sample ADC MAP DATA Licenses

[http://www.adcmaps.com/cd\\_products\\_prices.htm#data](http://www.adcmaps.com/cd_products_prices.htm#data)

---

Single User License for one Atlas - \$250

Departmental License (4 – 15 Users) for one Atlas - \$995

Agency Site License (16+ Users) for one Atlas - \$1,295

Discounts are available for multiple Atlas purchases

Please visit <http://www.adcmapsoncd.com>

**NEW County Government Annual Unlimited License**

**\$7,995**

**Covers all County Government Users with one license!**

**No longer is it necessary for Police, Fire, DPW, Schools, Libraries,  
or IT Departments to license separately**



## Sample ADC SOFTWARE Licenses

---

Mapviewer BASIC is sent **FREE** with all data licenses.

MapViewer ADVANCED - \$49.95

- Includes tool to look up features by the index (gazetteer) in the back of the ADC Map books

Mapviewer PRO - \$250

- Includes all of the tools of Mapviewer BASIC and ADVANCED plus includes the ability to look up individual addresses

Grid Look-up Software – visit [www.adcmapsoncd.com](http://www.adcmapsoncd.com)



## FOR ADDITIONAL INFORMATION

---

**GIS Integrated Solutions LLC**

**3500 Boston Street, Suite 212**

**Baltimore, Maryland 21224**

**(410) 524-1550**

**(410) 524-1551 (fax)**

**info@gisintegratedsolutions.com**

**<http://www.gisintegratedsolutions.com> and**

**<http://www.adcmaps.com>**

